

Facility E Associated Transmission Pipeline – GTC 947/2019

Client

Boom Construction Company W.L.L.

Scope of Work

Detailed Design
IFC

Location

Qatar

Type of Activities

Civil
Communications and Security Systems
Electrical
Instrumentation and Control
Mechanical
Structural

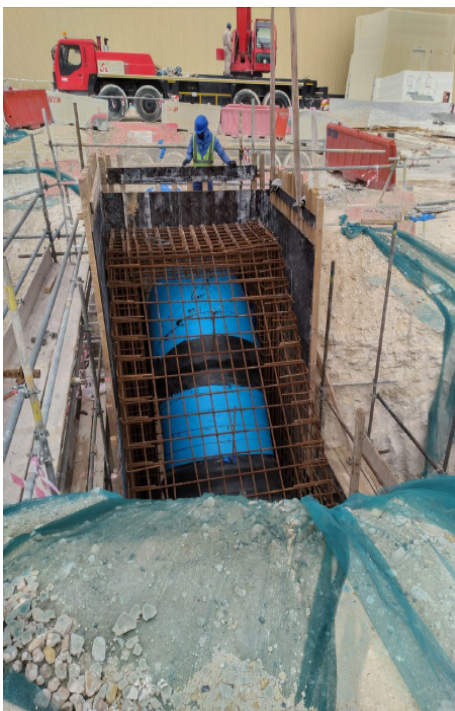
Two KAHRAMAA transmission mains from the 60 MIGD Independent Power and Water Producer (IPWP) facility at Umm Al Houll as follows:

- 15 km 1,600 mm dia. to Mesaieed Industrial City (MIC)
- 1,200 km 600 mm dia. to Al Wakra Industrial Area

The scope of works includes:

- Hydraulic study for the entire water pipework, pumping station, and reservoir systems
- Surge and transient analysis for the complete piping system
- Solution for reversing flow through the existing 1,200 mm dia. pipeline
- Two fibre optic cables for Afjat Muaitheer and Mekaines Reservoir Pumping Stations (RPSs)

- Chambers and interconnections
- 1,200 mm dia. interconnection pipeline adjacent to Mesaieed Town secondary reservoir pumping station
- Modifications and expansion of the existing monitoring and control equipment, facilities, and accessories in the pump station (PRPS-5) and incorporating new valves, flowmeters, piping, and instrumentation in the station control and monitoring system





- 900 mm dia. interconnection pipeline on Dukhan Road, between the existing 900 mm dia. pipelines, including chambers and interconnections
- 600 mm dia. interconnection pipeline at Ras Bu



- Funtas, between the existing 600 mm dia. pipelines, including chambers and interconnections
- 2 km pipelines 300 mm /400 mm/ 600 mm dia. at Lebsayyer