

Expansion of the Suez Canal Container Terminal in Port Said

Client

HATCH

Scope of Work

Schematic Design
Detailed Design
Tender Documents
Design Permits
Tender Action

Location

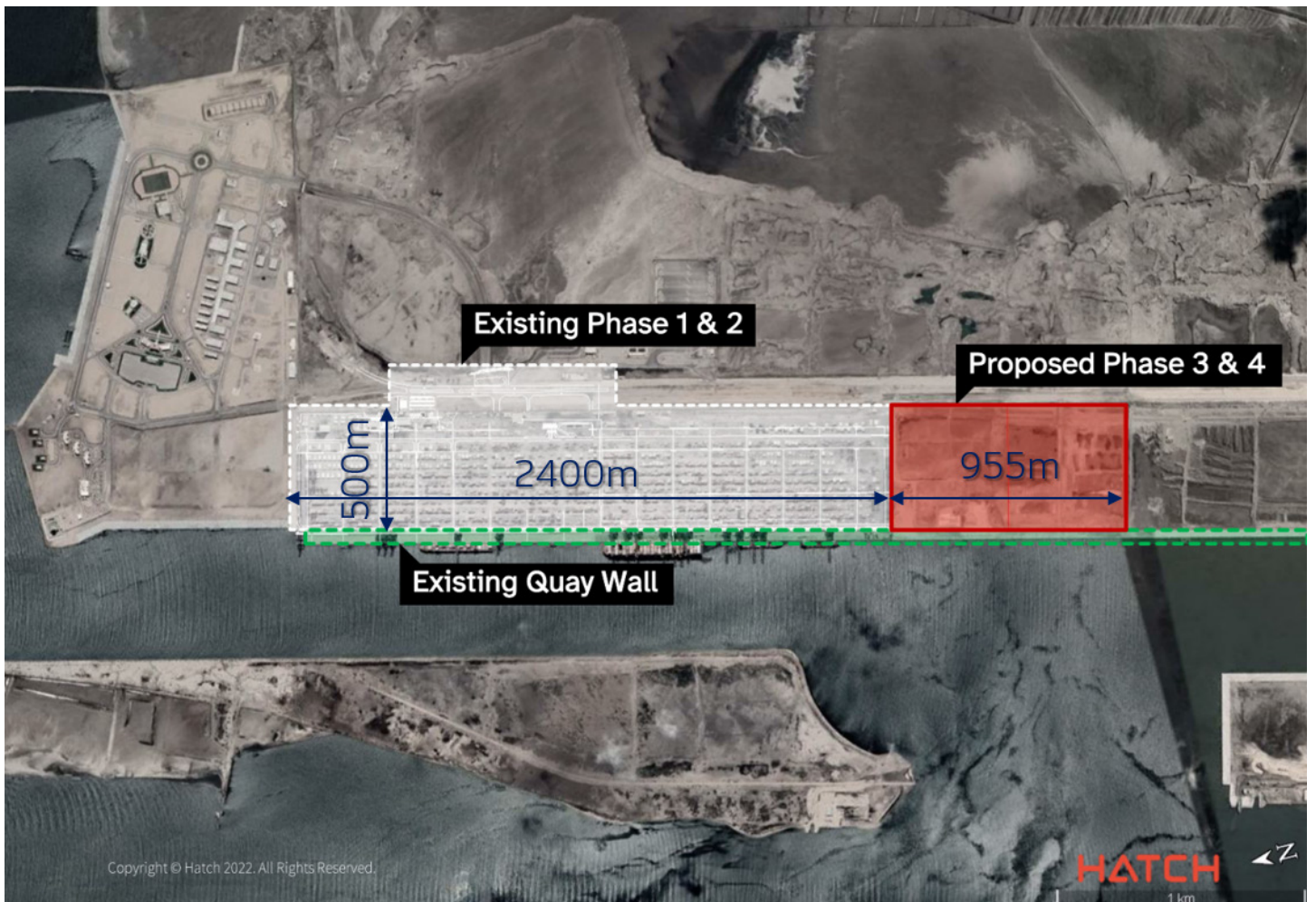
Port Said, Egypt

Types of Activities

Architectural
Civil Works Fire Fighting
Communications and Security Systems
Electrical
HVAC
Landscaping
Mechanical
Roads
Structural

Extension of the current container terminal with overall berth length of 955m long and by 500m depth of yard. The two-stage extension includes 12 ship-to-shore cranes and accommodates approximately 8K ground slots and 800 reefer plugs. Stage 1 encompasses eight ship-to-shore cranes, while Stage 2 includes four. Container handling from quay to yard is done through terminal tractor-trailers and within the yard through electrical rubber-tired gantry cranes (E-RTG) supplemented with empty handlers in addition to a number of reach stackers.

There is also an adjacent intermodal yard might be used for rail-based operations. Other facilities include a gate complex, workshop, maintenance, administration building, control and security buildings, customs, and inspection areas etc.





Expansion of the Suez Canal Container Terminal in Port Said